



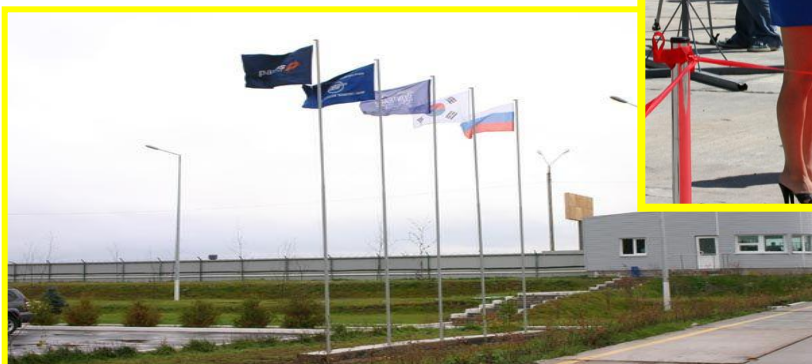
CONTAINER TERMINAL TUCHKOVO

JSC CONTRANS



CONTAINER TERMINAL «TUCHKOVO» JSC «CONTRANS»

Together – to achieve the highest level service



CONTAINER TERMINAL «TUCHKOVO» JSC «CONTRANS»

Container terminal «Tuchkovo» JSC
Contrans – a joint investment
infrastructure logistics project Russian
and South Korean company – is
designed to handle heavy tonnage
containers.



CONTAINER TERMINAL «TUCHKOVO» JSC «CONTRANS»

Location



Moscow Region, Tuchkovo
Approximately 65 km from MKAD
Total area more than - 90 000 m²



CONTAINER TERMINAL «TUCHKOVO» JSC «CONTRANS»

Railways



Convenient geographical location and two railway lines with total length of more than 1000 meters, allows you to send and receive containers by rail and road.



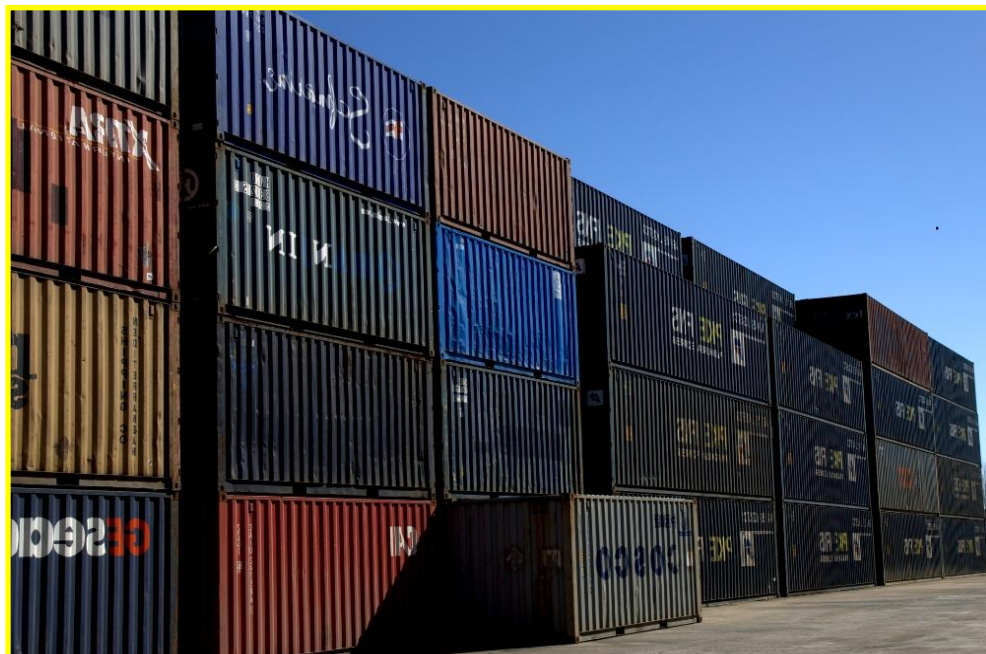
Railroad terminal at a time can take complete container trains, consisting of 71 platforms.

CONTAINER TERMINAL «TUCHKOVO» JSC «CONTRANS»

Open area



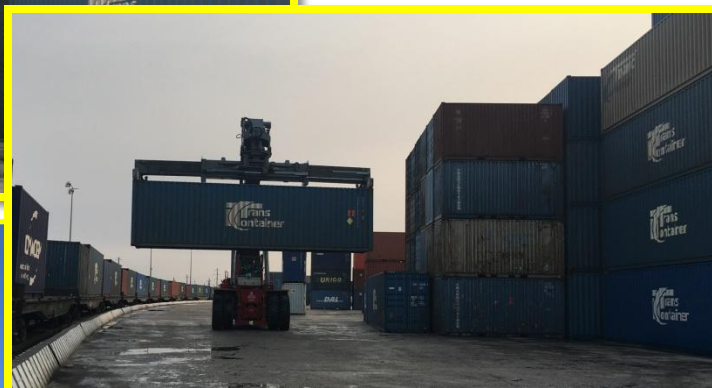
Open area for warehousing and storage containers of various sizes has a total area of 30,000 square meters, can accommodate more than 5000 TEU



CONTAINER TERMINAL «TUCHKOVO» JSC «CONTRANS»

Newest loading machines

We use the newest handling equipment reachstackers FERRARI, KALMAR and FANTUZZI capacity of 45 tons, so you can quickly and efficiently carry out the processing of containers and storage of up to 5 tiers



CONTAINER TERMINAL «TUCHKOVO» JSC «CONTRANS»

Customs storage

In the area of container terminal Tuchkovo operates a open customs warehouse - CW Tuchkovo. We have an high-tech equipment, allowing for all necessary procedures for customs control of goods: Radiation Control, X-ray control (maximum size of controlled pallet 1450x1800), the search dosimetric control, it is also necessary handling and weighing equipment to accurately determine the weights of the various categories of goods.



All the equipment has the necessary certificates, permits and calibration certificates.



CONTAINER TERMINAL «TUCHKOVO» JSC «CONTRANS»

Covered storage



Covered warehouse total area of 735 m2 for storing goods that are sensitive to the effects of environment.



CONTAINER TERMINAL «TUCHKOVO» JSC «CONTRANS»

Services

Our company provides the following services:

- Receiving and sending of loaded and empty containers at the terminal.
- Storage containers
- Auto delivery loaded and empty containers by the territory of Russian Federation
- Railway shipment loaded and empty containers on the territory of Russia and the CIS countries, including the payment of railway fare and provide a platform.
- And also we can work with different kinds of goods such as long measures, heavyweights, complex structures and types of containers of various sizes as flatrack-containers, open top-container, tank-containers, refrigerated containers can be connected to the mains.

Also, our company provides customs storage services:

- Placing the container on the CW
- Storage container in the CW
- Preparation of documents DO-1 and DO-2 for customs clearance
- Range of services during the customs inspection, including loading and unloading, sorting and rendering loads mechanically and manually
- Weighed and an X-ray television control of goods subject to customs control

CONTAINER TERMINAL «TUCHKOVO» JSC «CONTRANS»

Contacts

Terminal Tuchkovo
Moscow Region
Ruza District
Tuchkovo, Vostochnaya str.1
Phone : +7 (495) 609-6638
Fax: +7 (495) 609-66-39
E-mail: info@contrans.info
Web: www.contrans.info



Welcome !